

# Power and Renewable Market Advisory Service



In today's volatile energy markets it is a fact that sources of risk and uncertainty will continue to impact market perceptions and investment decisions. This uncertainty both threatens the competitiveness of energy assets and new asset development and is also a potential source of value. Renewable and low carbon mandates are playing an increasingly significant role in power markets. Pace Global Energy Services has provided advisory services to the energy markets for over 30 years and understands key market drivers and risks. Pace's Power and Renewable Energy Market Advisory Service provides perspectives on the opportunities and risks associated with development of both conventional and renewable technologies on a regional basis to help clients understand policy, commercial and market dynamics and use this knowledge to gain a competitive advantage. Pace's offering provides this insight with regular, structured regional assessments, supplemented by customized portfolio analysis and advisory



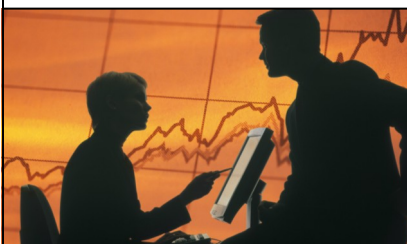
## Customized Portfolio Assessment



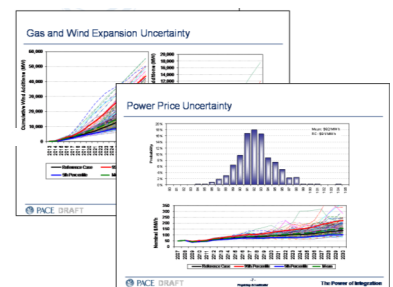
- Customized assessment of your assets or market areas of interest
- Commercial perspectives on the potential and risks of different technologies
- Regular updates on key national or regional regulatory and market developments
- Advisory calls that translate market and regulatory perspectives
- Interpretation of market risks and impacts to your assets

Technology Performance				
Gas—Baseload	●	➔	High	Economics likely to become favorable to new development within 5 years, but projects face elevated risk from constrained capacity market prices.
Gas Peaking	●	⬇	Moderate	Large fleet of existing peaking capacity limits upside potential, but economics should improve within 5 years.
Coal	●	➔	Low	Coal is limited in region, and regulatory environment does not support it growing.
Nuclear	●	➔	Moderate	Nuclear development does not have political or public support in the region.
Renewable—Wind	●	⬇	Moderate	RPS Rules, and other environmental compliance regulations will drive demands and returns.
Renewable—Solar	●	⬆	Moderate	Distributed PV applications may be viable but large-scale applications are unlikely.
Renewable—Biomass	●	⬆	Moderate	Baseload renewables are needed but the availability of resources are localized.

## Power Market Analysis



- Risk assessment of key market drivers
- Integrated market and regulatory perspectives
- Rigorous uncertainty analysis to quantify investment risks
- Analysis that capture real world market behavior
- Stochastic price projections for key price points

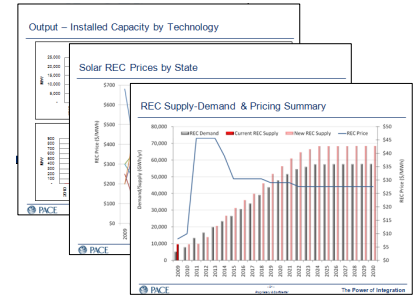




## Renewable Energy Market Analysis



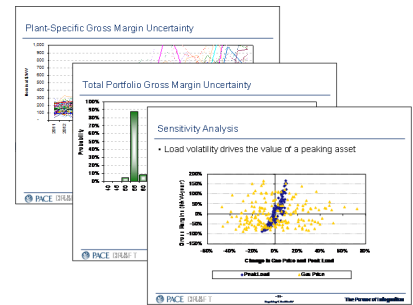
- Legislated and voluntary demand for renewable energy, policy analysis
- Renewable generation project returns by region and technology
- Renewable Energy Certificate ("REC") price advisory
- Renewable supply build out assessments



## Generation Asset Performance Assessments



- Integrated dispatch and margin analysis
- Quantification of uncertainty bands around key performance indicators
- Customized dispatch analysis for specific plants available
- Market opportunity identification by resource and region



## Pace's Power and Renewable Market Advisory Standard Service Package:

- Monthly - power, REC and capacity forward curves for region(s)
- Monthly - update of national and regional developments
- Semiannually - deep dive regional analysis including risk and assessment of asset class
- Ongoing - regular communication with Pace experts



For more information on our **Power and Renewable Market Advisory Service**, please contact:

Gary Vicinus  
EVP & Managing Director, Power  
703.227.8802  
Gary.Vicinus@Paceglobal.com

Art Holland  
Vice President, Power  
703.227.1075  
Art.Holland@Paceglobal.com

Melissa Ritter  
Director, Environmental Markets & Policy  
703.227.8793  
Melissa.Ritter@Paceglobal.com